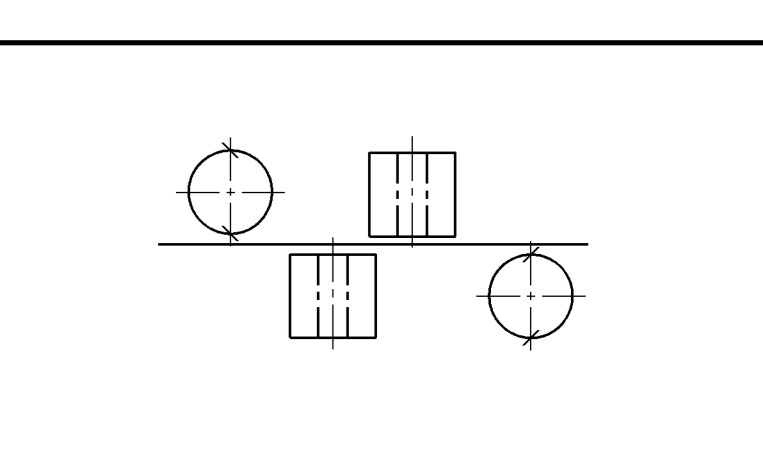
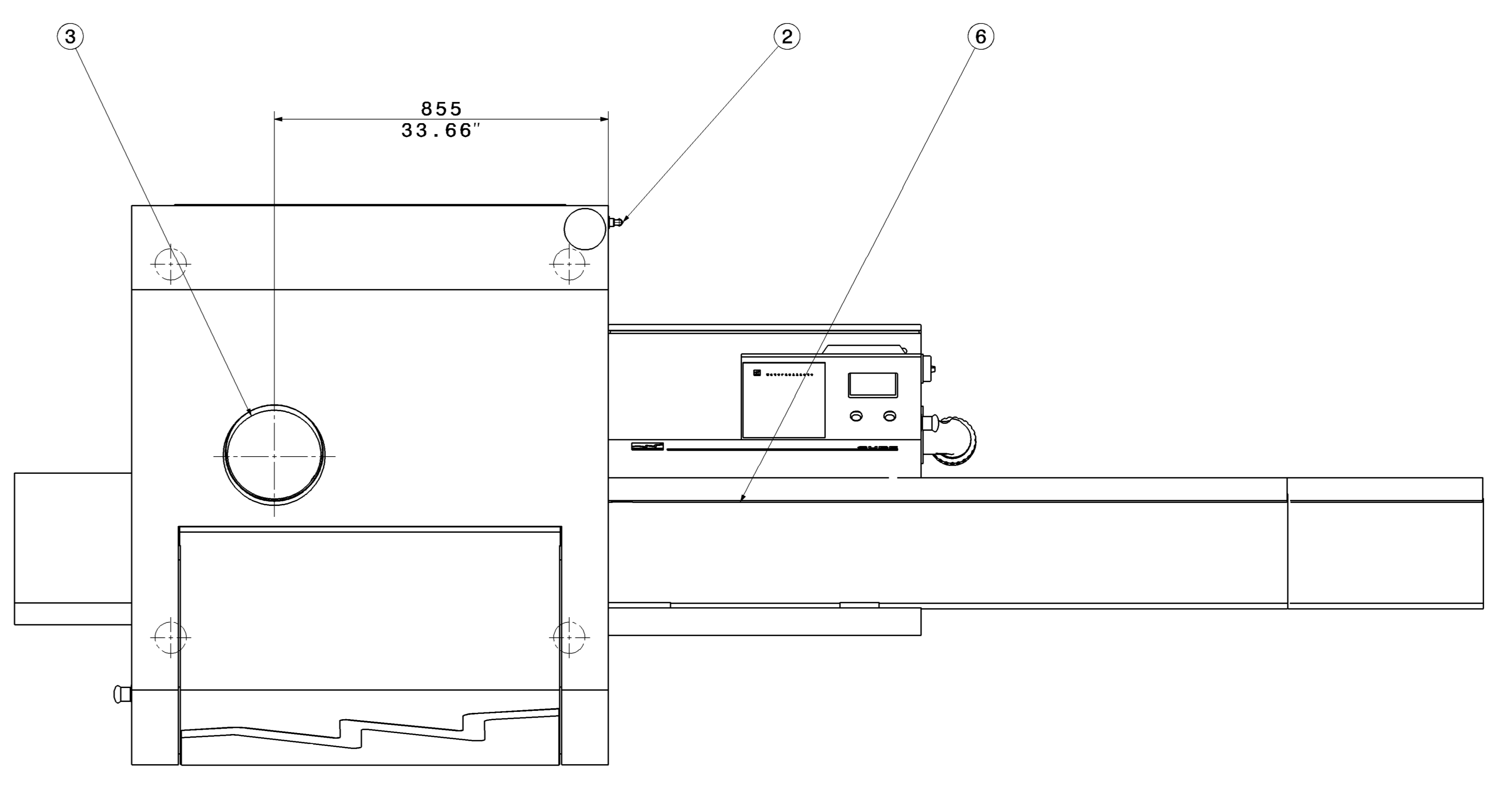
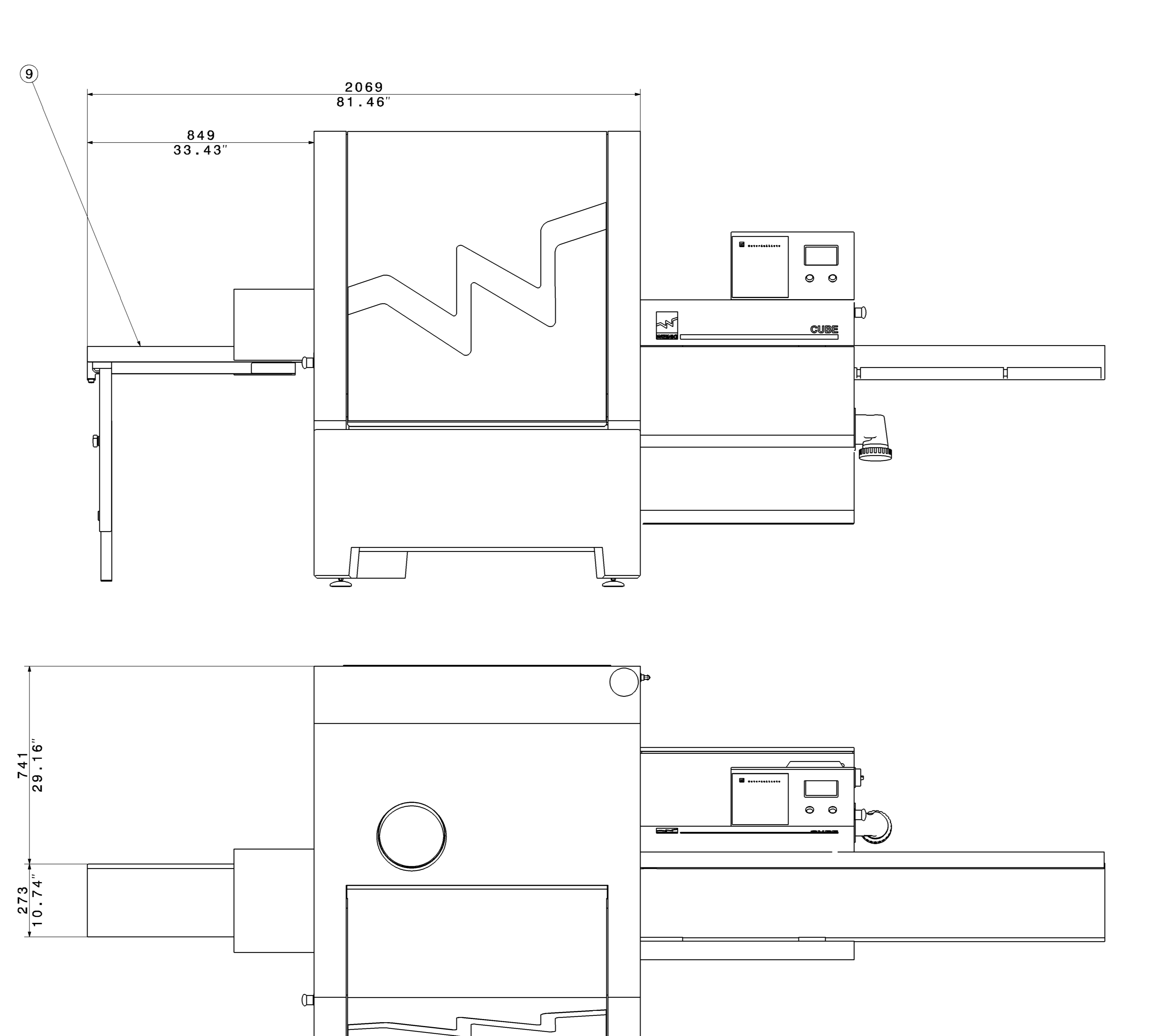
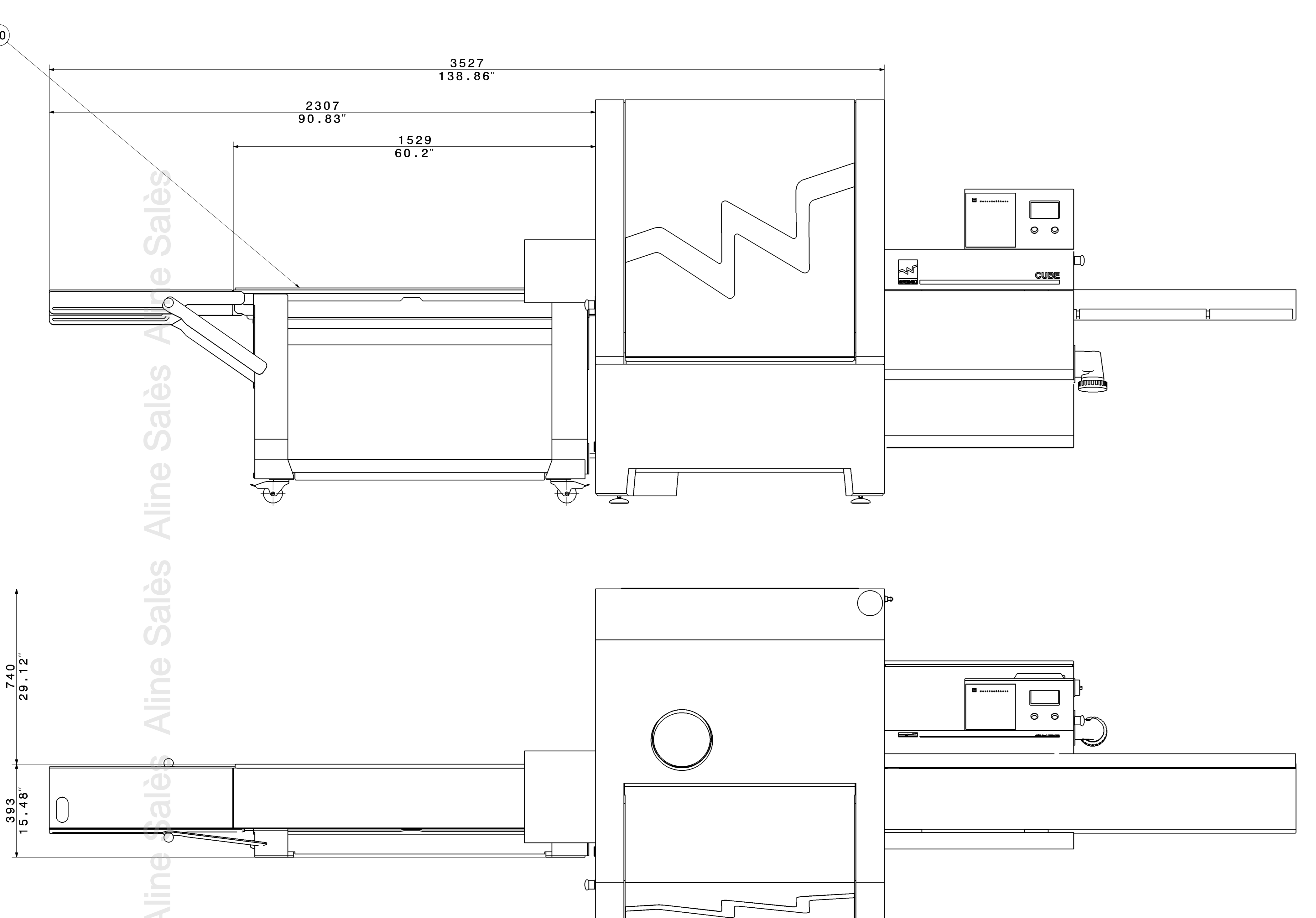
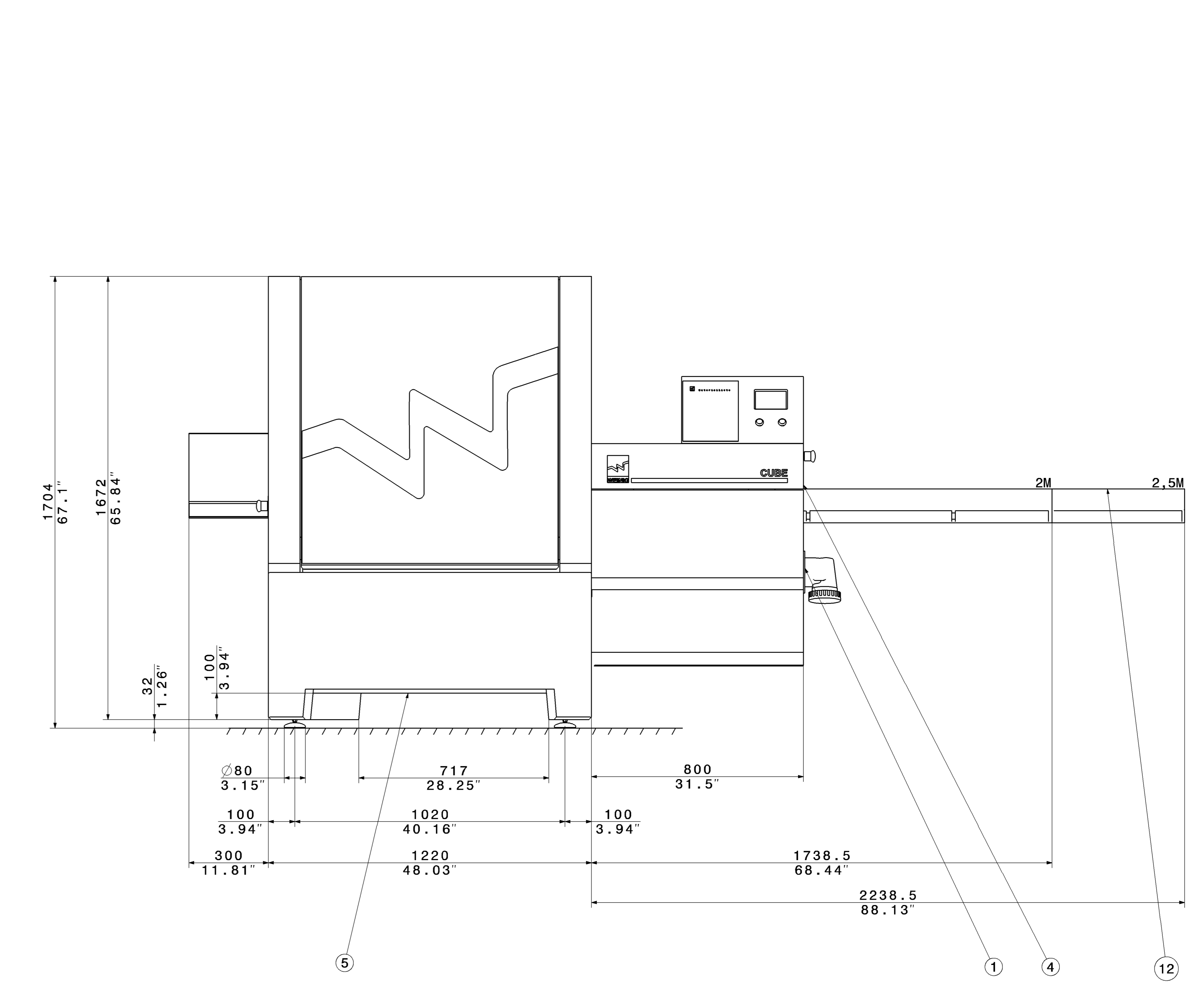
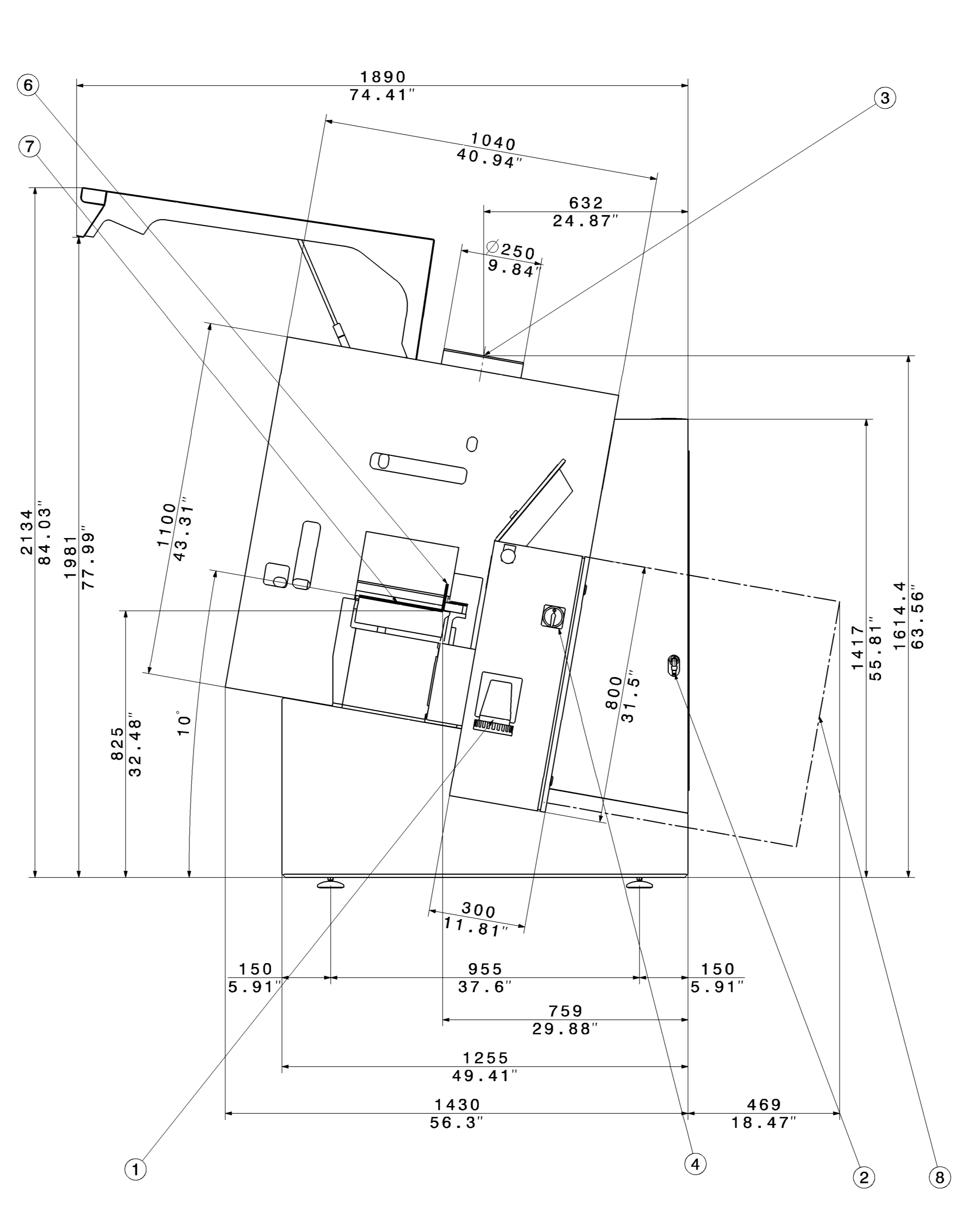
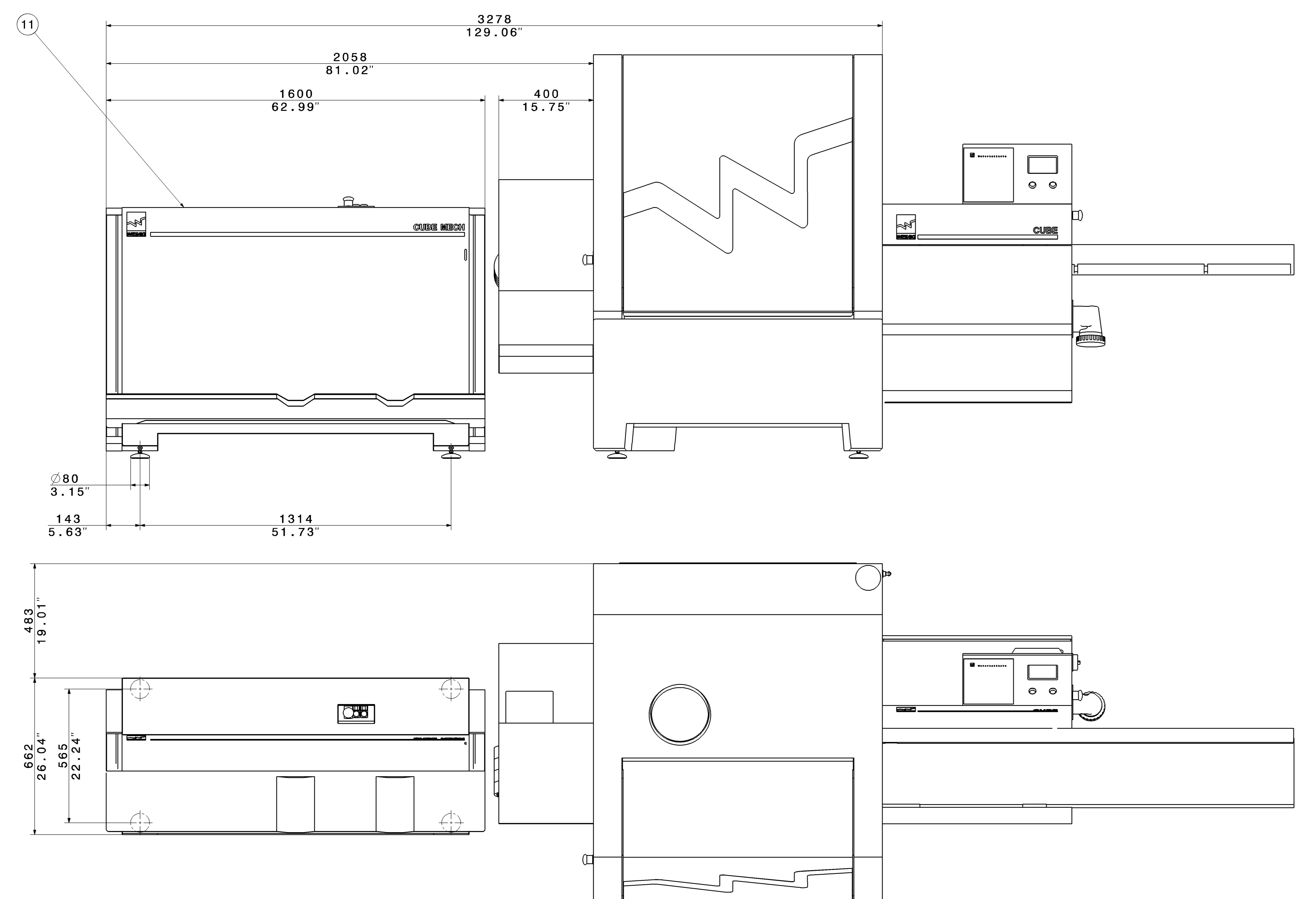


SPECIFICATIONS



**TECHNISCHE DATEN
TECHNICAL DATA**

GESAMTANSCHLUSSLEISTUNG STANDARD: OPTIONAL MOTORVERSTÄRKUNG ELECTRICAL CONNECTION STANDARD: OPTIONAL MOTOR ENHANCEMENT	28 KW 38 KW OPTIONAL	
TOTAL CONNECTED LOAD STANDARD: OPTIONAL ENHANCED POWER SEE ORDER CONFIRMATION		
LUFTELEKTRISCHKEIT AIR VOLUME	20 M ³ /S	
AUSTRITZLUFT PRO SPINDEL AIR FLOW MEASUREMENT PER SPINDLE	15 M ³ /MIN	
GESAMTLUFTELEKTRISCHKEIT TOTAL AIR FLOW	3550 M ³ /H	
UNDERSUCK DRUCK 20 M ³ /S UNDERPRESSURE AT 20 M ³ /S	950-1100 Pa	
PNEUMATISCHER ANSCHLUSS PNEUMATIC CONNECTION	NENNDRUCK NOMINAL PRESSURE	8 BAR
	WECHSELDRUCK SERVICE PRESSURE	6 BAR
	ANSCHLUSSDRUCKMESSER CONNECTION DIMETER	DN 8
GEWICHT DER MASCHINE WEIGHT OF MACHINE	CA. APPROX. 2200 KG	
STATISCHE BELASTUNG DRUCK UNTERKOPFPLATTE 3 00 MM STATIC STRAIN UNDER PLATE 3 00MM	MAX. 125 N/CM ²	



- 1 ELEKTRISCHER ANSCHLUSS
ELECTRICAL CONNECTION
ANSCHLUSSSTECKER
CONNECTING PLUG
CEE 63A
- 2 PNEUMATISCHER ANSCHLUSS
PNEUMATIC CONNECTION
ANSCHLUSSSTECKER
CONNECTING PLUG
GR.3
- 3 ABSAUGSCHLAUCH-ANSCHLUSS
EXHAUST PIPE CONNECTION
- 4 HAUPTSCHALTER
MAIN SWITCH
- 5 AUSSPARUNG, STAPLER- ODER HUBWAGENTRANSPORT
CUT-OUT, TRANSPORT WITH FORKLIFT OR HAND LIFT
- 6 ANSCHLAGKANTE
REFERENCE EDGE
- 7 TISCHEBENE
TABLE
- 8 TÜR GANZ GEÖFFNET
DOOR COMPLETELY OPENED

- OPTIONEN / OPTIONS
- 9 AUSLAUFTISCH KLAPPBAR, LÄNGE 800MM
OUTFEED TABLE; FOLDABLE LENGTH 800MM
- 10 AUSLAUFTISCH SCHIEBBAR, LÄNGE 1550MM AUF 2300MM KLAPPBAR
OUTFEED TABLE, SLIDABLE, LENGTH 1550MM FOLDABLE TO 2300MM
- 11 STAPELAUTOMAT, CUBE MECH
OUTFEED STACKER, CUBE MECH
- 12 EINLAUFTISCH 2,5M
STRAIGHTENING TABLE 2,5M